



**KØBENHAVNS KOMMUNE**  
Children and Youth Administration



## **UU Copenhagen – Youth Guidance Centre of Copenhagen**

UU Copenhagen  
Korsgade 30  
DK - 2200 Copenhagen

Phone: +45 3920 7500  
Fax: +45 3917 0760  
Email: [uuf@buf.kk.dk](mailto:uuf@buf.kk.dk)  
Website: [www.uu.kk.dk](http://www.uu.kk.dk)

### **UU Copenhagen**

A service institution under The Children and Youth Administration, City of Copenhagen.

### **Educational Guidance and Counselling**

UU Copenhagen caters for students from year 8 in the public and private schools of Copenhagen.

The education planning includes composing an individual education plan and participation in a variety of guidance activities.

UU Copenhagen offers young people under the age of 19 – who are not in a satisfactory guidance, education or job situation counselling about choice of education and job.

Young people between 19 and 25 are offered education and job counselling which is primarily targeted their choice of youth education or secondarily getting a job.

<http://eng.uvm.dk/Fact%20Sheets/Guidance.aspx>



## Facts about the City of Copenhagen

Population: 550.000  
12 - 15 years: 16.000  
16 - 19 years: 17.000  
20 - 24 years: 52.000  
App. 29% of this age group is bilingual

City of Copenhagen, the different administrations:



**Lord Mayor – Frank Jensen**



### **Major Anne Vang**

The Children and Youth Administration

Schools, UU, Health Visitors, Pedagogical-Psychological Guidance

### **Mayor Mikkel Warming**

The Social Services Administration

Social workers

### **Mayor Anna Mee**

The Employment and Integration Administration

Job Centres

In Copenhagen there are 56 Folkeskoler/municipal, public schools

Children enter compulsory education in August in the calendar year of their 6th anniversary. Parents are free to choose any school within their municipality.

The Danish Folkeskole is a comprehensive school covering both primary and lower secondary education, i.e. the first (Year 1 to 6) and second (Year 7-9/10) stage basic education. In other words, it caters for the 7-16/17-year-olds.

The education in the Folkeskole is free.

<http://eng.uvm.dk/Aktuelt/News/Eng/2010/April/100422%20Welcome%20to%20the%20Danish%20Public%20School.aspx>

In Copenhagen we have about 51 private schools.



All that is demanded of private education is that it measures up to that of the Folkeskole.

In 2006, the average grant towards the operational expenditures per pupil per year amounts to about DKK 41.000, and the average fee paid per year by the parents to DKK 9.000.

The number of pupils attending private schools is rising 1987/88 – 9,93%  
2006/07 – 13,39% (Numbers for Denmark)

About 26% of all pupils in Copenhagen (2008) + 2% "efterskole"

<http://eng.uvm.dk/Uddannelse/Primary%20and%20Lower%20Secondary%20Education/Private%20Schools%20in%20Denmark.aspx>

## **Facts about UU Copenhagen**

App. 140 employees

- Four geographic teams, including special aid and task force counsellors
- One EGU team
- One STU team
- One part time team with career advisors from the Youth Educations
- H.Q. in Korsgade, Open Centre, Administration

## **Mayor Aim**

2015: 95% must complete a youth education programme (vocational or other) after 10 years basic school.

Focus on young people with special needs for guidance

[http://www.uu.kk.dk/upload/materialer/pjecer/for%C3%A6ldre\\_folder\\_engelsk\\_3.pdf](http://www.uu.kk.dk/upload/materialer/pjecer/for%C3%A6ldre_folder_engelsk_3.pdf)

## **Special programmes**

Production schools -

<http://eng.uvm.dk/Fact%20Sheets/Upper%20secondary%20education/Production%20schools.aspx>

[http://www.produktionsskoler.dk/5b\\_engelsk.php](http://www.produktionsskoler.dk/5b_engelsk.php)



EGU – basic vocational training

<http://eng.uvm.dk/Fact%20Sheets/Upper%20secondary%20education/Basic%20vocational%20education%20and%20training%20EGU.aspx>

STU – specially designed education programs for young people with disabilities/severe diagnosis/low IQ

Work training programmes – and several other options and activities to encourage and motivate young people to choose an education.

Careers  
Education



Classroom  
Activities



Vocational  
Training



Courses at local  
educational  
institutions



## INDIVIDUAL EDUCATIONAL PLAN

Individual  
counselling  
sessions with  
some pupils



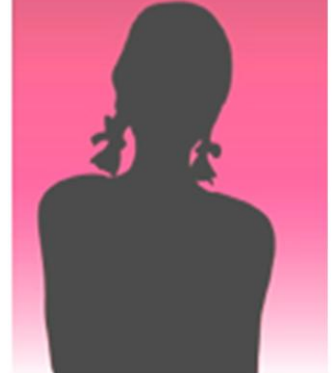
Extra activities for  
some students



Parents and  
local authorities



Counselling to  
the age of 25





**KØBENHAVNS KOMMUNE**  
Children and Youth Administration



Links where you can learn more about the Danish school system and guidance:

<http://eng.uvm.dk/Uddannelse.aspx>

<http://en.iu.dk/education-in-denmark>

For more info about UU Copenhagen, please contact:  
Leif Erik Pedersen, Head of UU Copenhagen +45 3920 7500